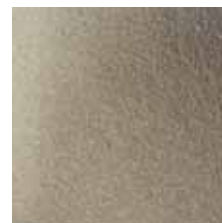




Sand
Zand
Sand
Arena



Absorption granules
Absorptiekorrel
Absorptionsgranulat
Gránulos absorbentes

IS

	L mm	B mm	H mm	mass kg	load cap. kg	spread width min - max km/h	operating speed km/h	coverage hectare	power required pk
IS 110	155	85	90	34	108/120	3-10 mtr.	3-8	1	6-8
IS 360	198	120	145	126	360/360	6-18 mtr.	6-12	2,5	25



- Spreader with steel, powder-coated bin
- To be attached to the rear of the forklift truck



- Streuer mit pulverbeschichtetem Stahlbehälter
- Hinter dem Gabelstapler zu montieren



- Strooier met stalen, gepoedercoate kuip
- Te bevestigen achter de heftruck



- Esparcidor con tolva de acero y recubrimiento de pintura en polvo
- Instalación a la parte posterior de la carretilla elevadora



Salt
Zout
Salz
Sal



White sand
Wit zand
Sand
Arena blanca

IZS

	L mm	B mm	H mm	mass kg	load cap. kg	spread width min - max km/h	operating speed - max km/h	coverage km/h	power required hectare pk
IZS 40	130	72	70	20	40/80	2-6 mtr.	variabel	variabel	manueel
IZS 108	155	86	80	40	108/120	2-6 mtr.	variabel	variabel	heftruck
IZS 260	200	200	120	120	260	2-6 mtr.	variabel	variabel	heftruck



- Salt spreader with steel or galvanized bin
- To be attached to the rear of the forklift truck



- Salzstreugerät mit Behälter in Stahl oder verzinkt
- Hinter dem Gabelstapler zu montieren



- Zoutstrooier met stalen, of verzinkte kuip
- Te bevestigen achter de heftruck



- Esparcidor de sal con tolva en acero o galvanizada
- Instalación a la parte posterior de la carretilla elevadora